

21660 COPLEY DRIVE

Diamond Bar, California

SUITE	RSF	Virtual Tour	AVAILABILITY
340	1,826		Now

LEASE OPPORTUNITY

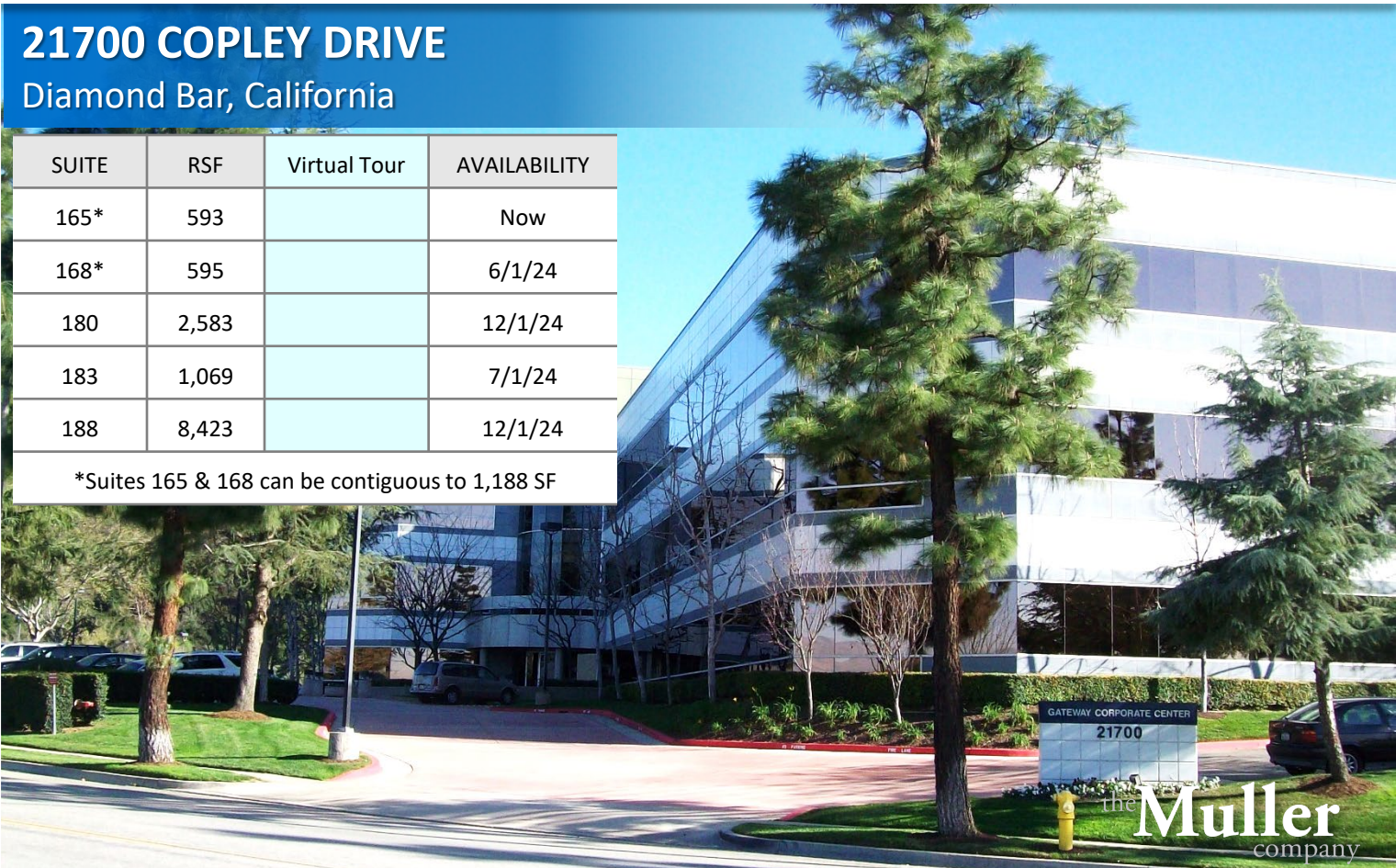


21700 COPLEY DRIVE

Diamond Bar, California

SUITE	RSF	Virtual Tour	AVAILABILITY
165*	593		Now
168*	595		6/1/24
180	2,583		12/1/24
183	1,069		7/1/24
188	8,423		12/1/24

*Suites 165 & 168 can be contiguous to 1,188 SF



For leasing information,
please contact:

SEAN KERN | 909.942.4691
Senior Director
sean.kern@cushwake.com
Lic. # 01377294

RYAN RUSSELL | 909.942.4697
Director
ryan.russell@cushwake.com
Lic. #01505274

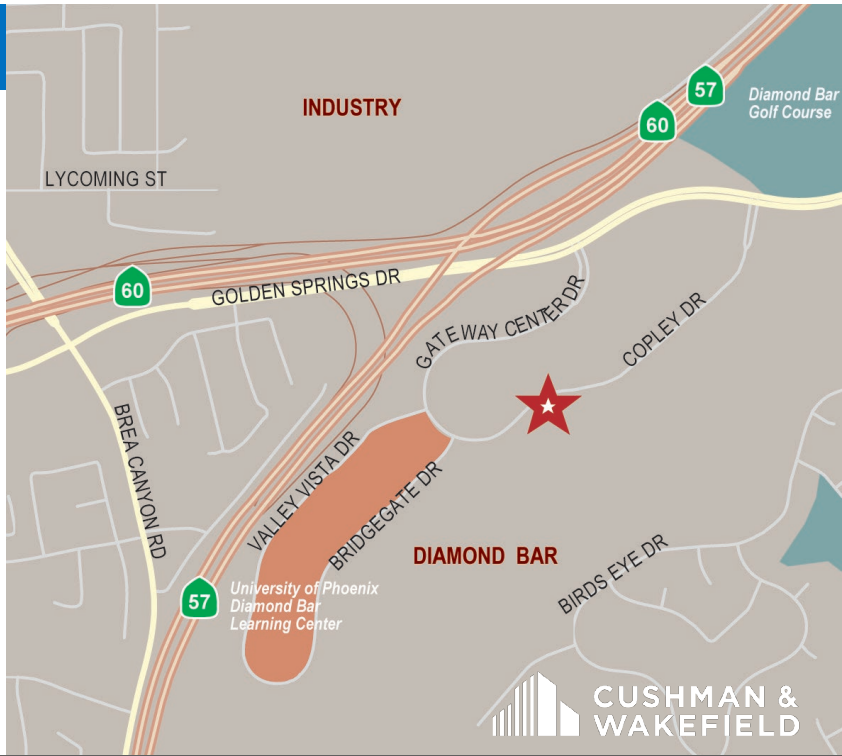
21660 & 21700 COPLEY DRIVE

Diamond Bar, California



FEATURES & AMENITIES:

- Lease Rate: \$2.90 FSG
- Parking 4:1000
- 3-story building located in a master-planned, 255-acre business park designed for corporate headquarters
- Dramatic Presence
- Lush Landscaping
- Centrally Located – Gateway to four counties
- Located Minutes from the 10, 57, 71 & 60 Freeways
- Close to Ontario International Airport, hotels, restaurants, business services and retail



No warranty or representation, express or implied, is made as to the accuracy of the information contained herein, and same is submitted subject to errors omissions, change of price, rental or other conditions, withdrawal without notice, and to any specific listing conditions, imposed by our principals.



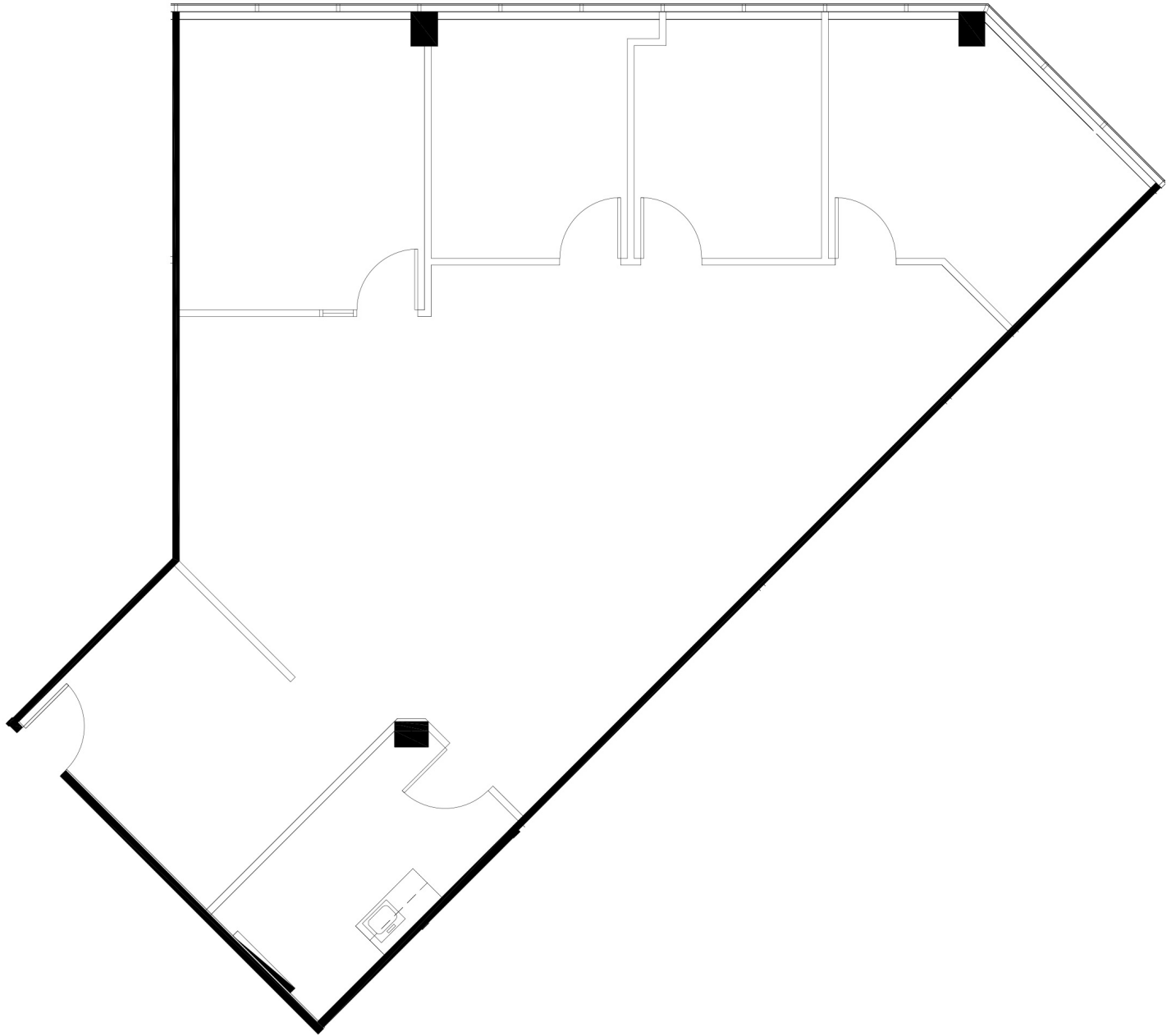
21660 COPLEY DRIVE

Diamond Bar, California

SUITE 340

1,826 SF

GATEWAY CORPORATE CENTER



For leasing information,
please contact:

SEAN KERN | 909.942.4691
Senior Director
sean.kern@cushwake.com
Lic. # 01377294

RYAN RUSSELL | 909.942.4697
Director
ryan.russell@cushwake.com
Lic. #01505274





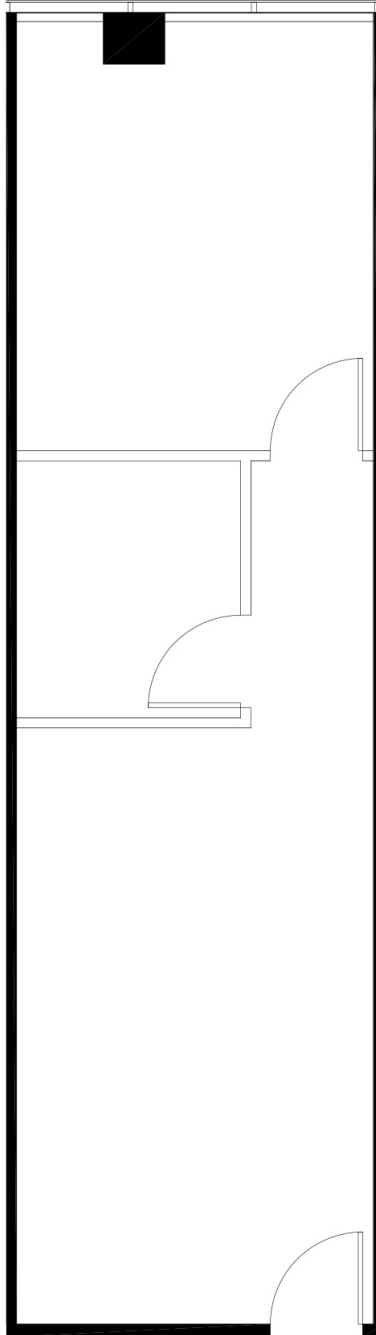
21700 COPLEY DRIVE

Diamond Bar, California

SUITE 165

593 SF

GATEWAY CORPORATE CENTER



For leasing information,
please contact:

SEAN KERN | 909.942.4691
Senior Director
sean.kern@cushwake.com
Lic. # 01377294

RYAN RUSSELL | 909.942.4697
Director
ryan.russell@cushwake.com
Lic. #01505274





21700 COPLEY DRIVE

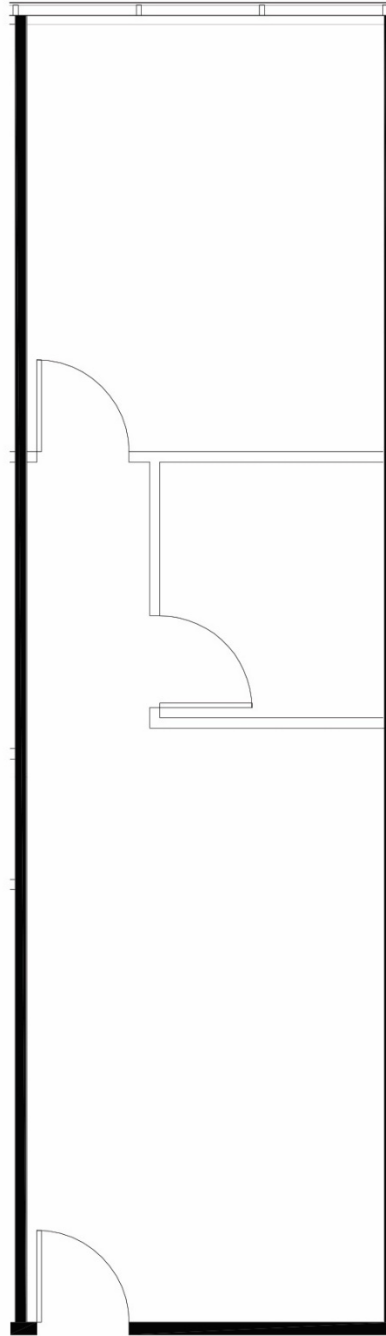
Diamond Bar, California

SUITE 168

595 SF

6/1/24

GATEWAY CORPORATE CENTER



For leasing information,
please contact:

SEAN KERN | 909.942.4691
Senior Director
sean.kern@cushwake.com
Lic. # 01377294

RYAN RUSSELL | 909.942.4697
Director
ryan.russell@cushwake.com
Lic. #01505274





21700 COPLEY DRIVE

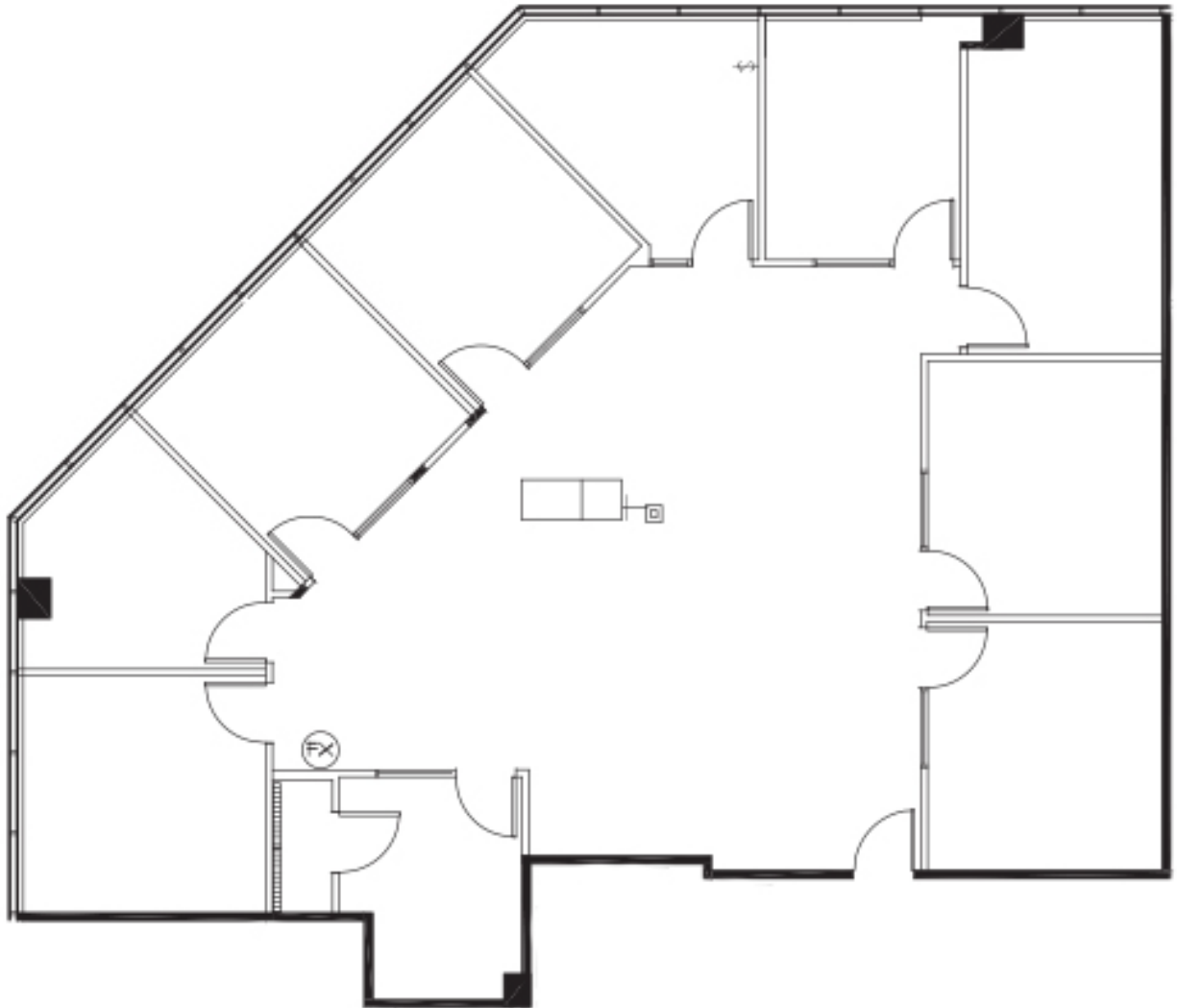
Diamond Bar, California

SUITE 180

2,583 SF

12/1/24

GATEWAY CORPORATE CENTER



For leasing information,
please contact:

SEAN KERN | 909.942.4691
Senior Director
sean.kern@cushwake.com
Lic. # 01377294

RYAN RUSSELL | 909.942.4697
Director
ryan.russell@cushwake.com
Lic. #01505274





21700 COPLEY DRIVE

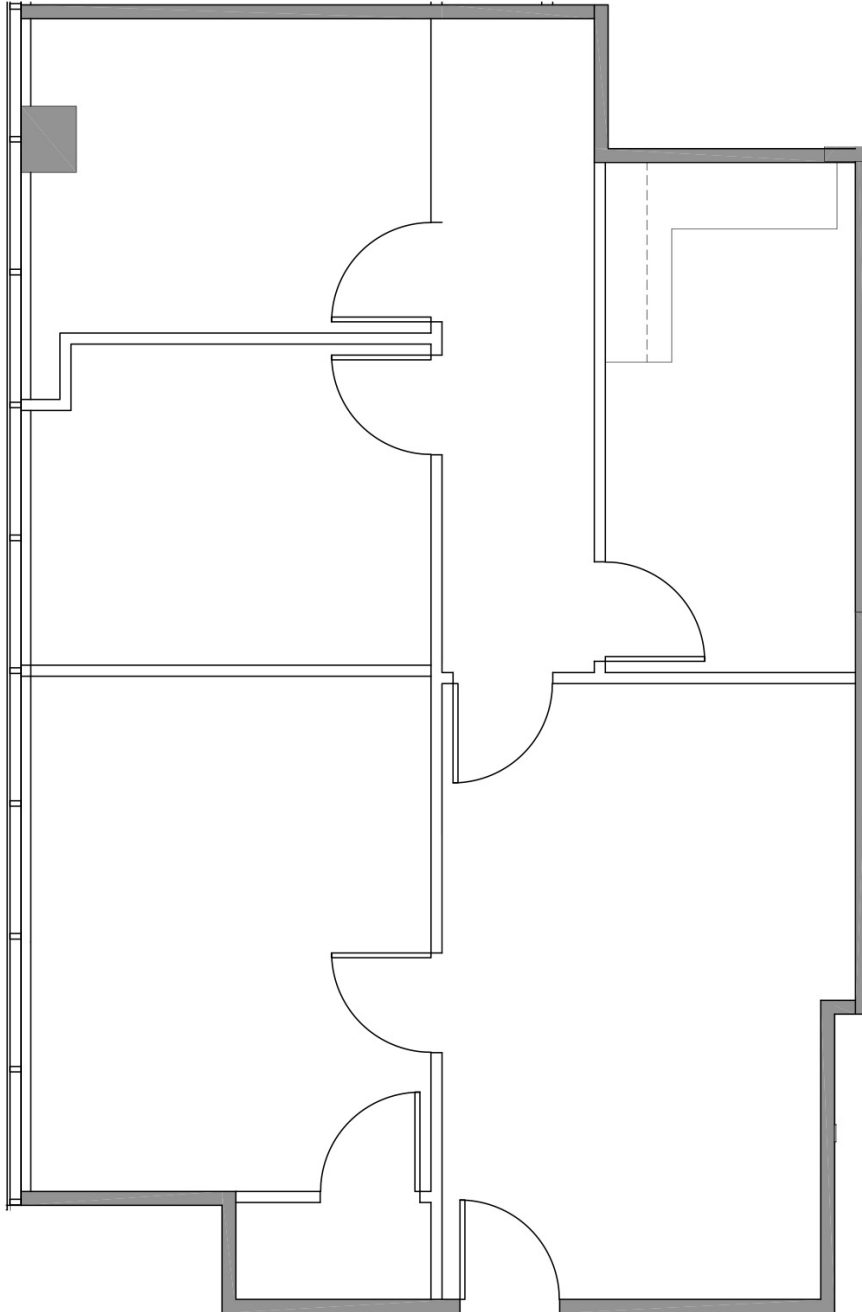
Diamond Bar, California

SUITE 183

1,069 SF

7/1/24

GATEWAY CORPORATE CENTER



For leasing information,
please contact:

SEAN KERN | 909.942.4691
Senior Director
sean.kern@cushwake.com
Lic. # 01377294

RYAN RUSSELL | 909.942.4697
Director
ryan.russell@cushwake.com
Lic. #01505274





21700 COPLEY DRIVE

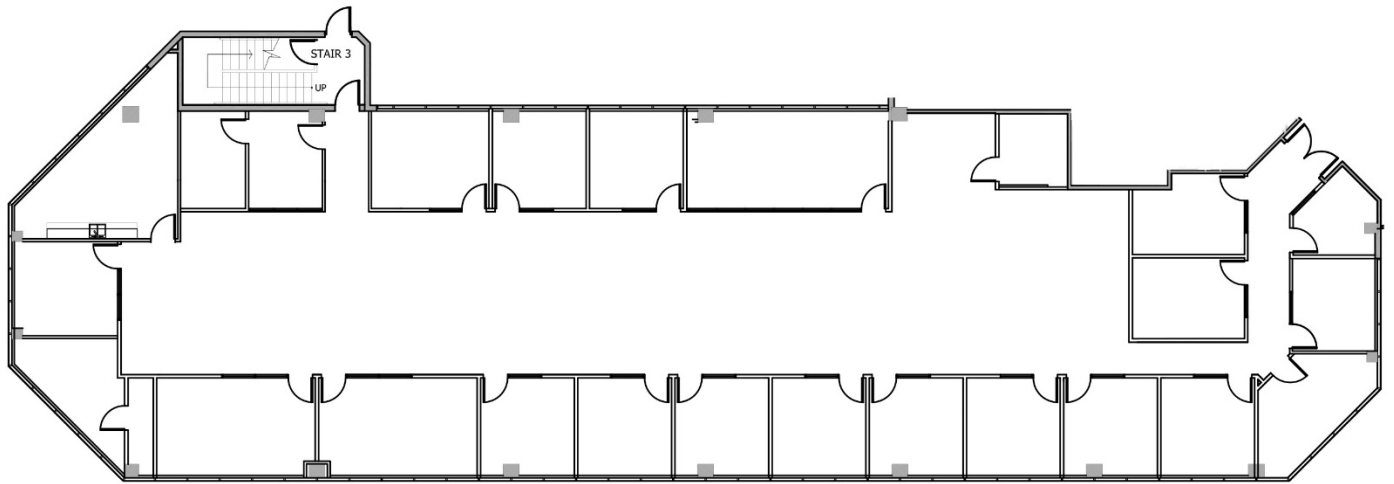
Diamond Bar, California

SUITE 188

8,423 SF

12/1/24

GATEWAY CORPORATE CENTER



For leasing information,
please contact:

SEAN KERN | 909.942.4691
Senior Director
sean.kern@cushwake.com
Lic. # 01377294

RYAN RUSSELL | 909.942.4697
Director
ryan.russell@cushwake.com
Lic. #01505274

